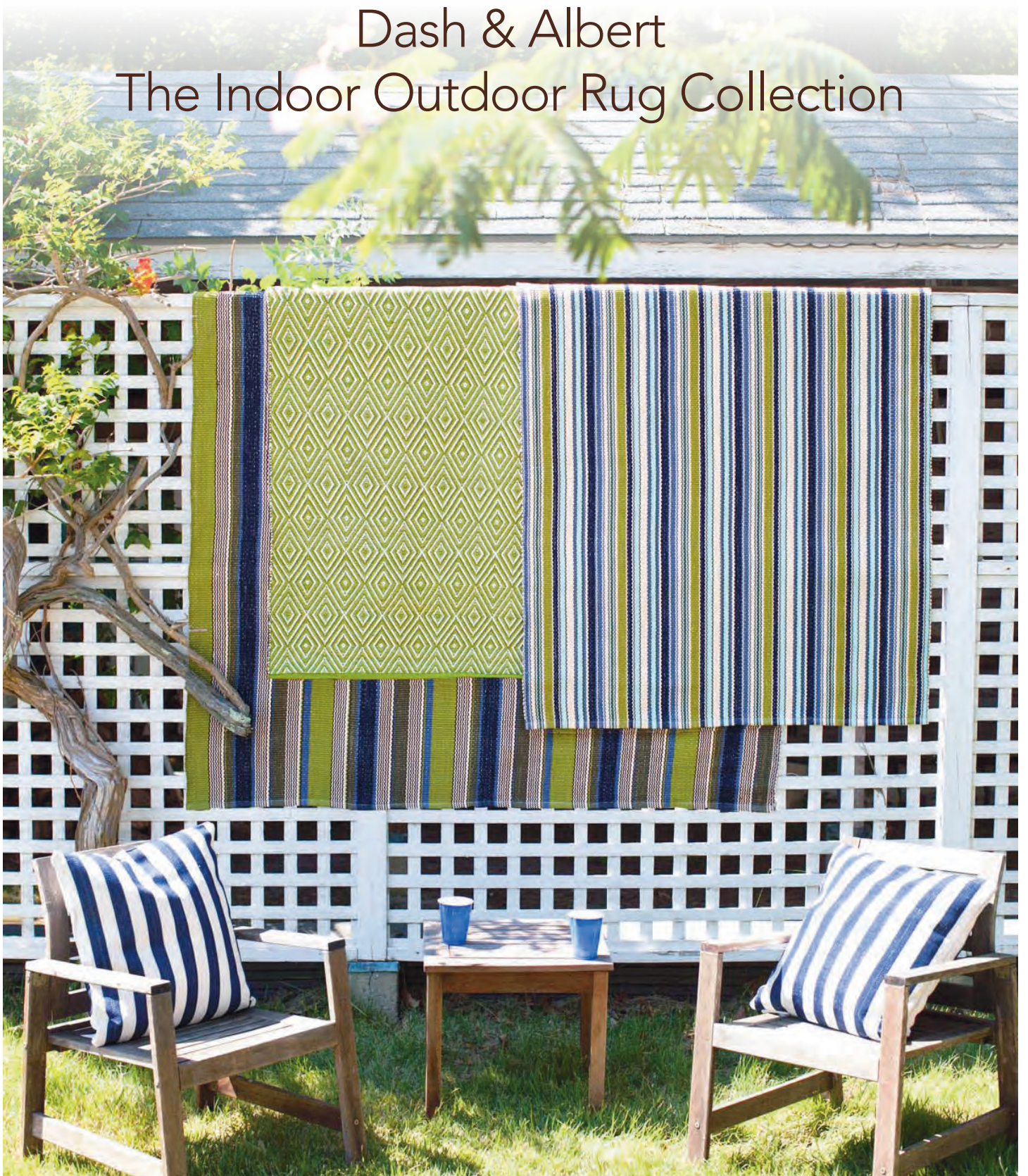


[www.matttuckerdesignstudio.com.au](http://www.matttuckerdesignstudio.com.au)



# Dash & Albert The Indoor Outdoor Rug Collection

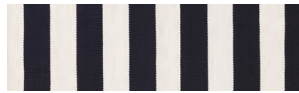




# INDOOR OUTDOOR RUGS – POLYPROPYLENE (100%)



CATAMARAN AQUA WHITE



CATAMARAN BLACK IVORY



CATAMARAN DENIM WHITE



CATAMARAN DENIM IVORY



CATAMARAN FIELDSTONE IVORY



CATAMARAN FUCHSIA WHITE



CATAMARAN GRAPHITE IVORY



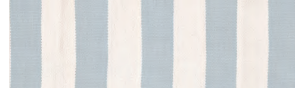
CATAMARAN GRAPHITE WHITE



CATAMARAN KHAKI WHITE



CATAMARAN NAVY KHAKI



CATAMARAN LIGHT BLUE IVORY



CATAMARAN NAVY IVORY



CATAMARAN NAVY WHITE



CATAMARAN PLATINUM WHITE



CATAMARAN PLATINUM IVORY



CATAMARAN RED WHITE



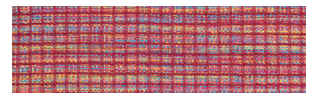
CATAMARAN SPROUT IVORY



CATAMARAN SPROUT WHITE



COCO BLUE



COCO RED



DIAMOND AQUA WHITE



DIAMOND BLUE IVORY



DIAMOND BLACK IVORY



DIAMOND BLUE WHITE



DIAMOND FIELDSTONE



DIAMOND FUCHSIA WHITE



DIAMOND GRAPHITE IVORY



DIAMOND GREEN WHITE



DIAMOND KHAKI WHITE



DIAMOND NAVY IVORY



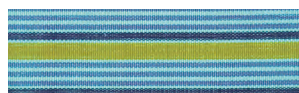
DIAMOND NAVY WHITE



DIAMOND RED WHITE



DIAMOND PINE



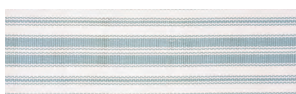
FROGSTRIPE



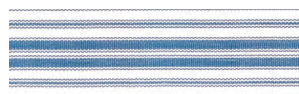
GUNNISON



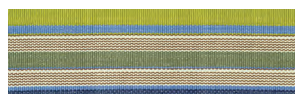
HAPPY YELLOW STRIPE



LIGHTHOUSE BLUE IVORY



LIGHTHOUSE DENIM



MARINA STRIPE



OTIS PINE



RUGBY STRIPE DENIM



RUGBY STRIPE LIGHT BLUE



RUGBY STRIPE PLATINUM



ROPE PLATINUM



SAMODE DENIM IVORY



SAMODE FIELDSTONE IVORY



SAMODE FUCHSIA IVORY



SAMODE GRAPHITE IVORY



SAMODE NAVY IVORY



SAMODE PINE



SAMODE LIGHT BLUE IVORY



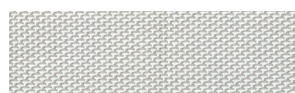
SAMODE PLATINUM IVORY



SAMODE SPROUT IVORY



TWO TONE ROPE NAVY WHITE



TWO TONE ROPE PLATINUM WHITE



TWO TONE ROPE RED WHITE



# Indoor Outdoor Rugs



## Uses

A Rug for all Seasons! Dash & Albert handmade Indoor Outdoor Rugs are terrific for high traffic areas: entrances, galley kitchens, kid's bedrooms and playrooms, family rooms, sunrooms, balconies, verandas and decks, BBQ and outdoor dining areas along with any area that gets wet such as laundries, bathrooms and pool decks. Ideal for homes with pets.

## Material

The collection is made from either super heroic, UV-treated 100% polypropylene or 100% recycled polyester (PET). The manufacturing technique provides a highly durable, stylish, textile look and feel that makes these Indoor Outdoor rugs truly unique to the market.

## Care

While regular vacuuming and the occasional gentle shake should keep your Indoor Outdoor rug in ship shape condition. All Indoor Outdoor rugs can be cleaned with cold soapy water and an ordinary garden hose to remove marks, stains or mildew. Allow to air dry. Do not machine wash or tumble dry these rugs.

**Remember, no one provides the quality, style and durability in Indoor Outdoor Rugs and Accessories like Dash & Albert!**



# FREQUENTLY ASKED QUESTIONS (FAQ'S)

## GENERAL INFORMATION

**Q1. What is an Indoor Outdoor rug?**

A: Dash & Albert Indoor Outdoor rugs are just that, they are rugs that have been designed for use in both indoor and outdoor living spaces. As well as being stylish and highly versatile they are extremely durable and are the perfect choice for high traffic areas. They are Ultra Violet (UV) treated, mould and mildew resistant, scrubbable, bleachable and not at all high maintenance. These rugs are a perfect complement in any indoor or outdoor living space.

**Q2. Where are Dash & Albert Indoor Outdoor rugs manufactured?**

A: The Dash & Albert Rug Company manufactures their products, including Indoor Outdoor rugs in India. Dash & Albert only use Fair Trade, Fair Labour workshops, so be rest assured you're purchasing a morally and ethically made product.

**Q3. What materials are Dash & Albert Indoor Outdoor rugs made from?**

A: The Dash & Albert Indoor Outdoor Rugs are made from either 100% Polypropylene or 100% recycled Polyester (PET). These rugs aren't like other polypropylene or polyester rugs on the market because of the process used in their manufacture.

The material fibres are produced by various spinning and twisting techniques which is then extruded into a fine yarn that is woven to form the various styles and patterns in the Indoor Outdoor rug range. As an analogy, just think of the thread count in sheets where the finer the thread and the higher the thread count, the softer and more luxurious the feel.

This manufacturing technique is what provides the stylish, high quality and textile look and feel in each and every Dash & Albert Indoor Outdoor rug and what makes these rugs unique to the market.

**Q4. What patterns in Indoor Outdoor rugs does Dash & Albert offer?**

A: There are currently over two hundred (200) different Dash & Albert Indoor Outdoor rugs to choose from, whether it's a Classic Stripe, Chevron or a Geometric pattern we're sure there will be something that you'll fancy in the Indoor Outdoor range. The following styles are available in the Indoor Outdoor range:

- Width Stripe - Catamaran and Chevron styles
- Length Stripe - Lighthouse Stripes, Marina Stripe, Pond Stripe styles, etc
- Geometric Pattern - Diamond and Samode styles
- Rope - Rope and Two Tone Rope styles

**Q5. What weaving techniques are used to create the Indoor Outdoor rugs?**

A: Dash & Albert incorporate a number of weaving techniques in the manufacturing process of their Indoor Outdoor range of products. These weaving techniques create the individual pattern and profile for each rug style in the range.

The following weaving techniques are used in making the various styles of Indoor

Outdoor rugs:

- Width Stripe - these rugs are woven in a Dhurrie style weave which creates a tighter low profile rug. The term Dhurrie refers to the technique of weaving where no knots are used
- Length Stripe - these rugs are a more traditional hand woven flat weave, where the weft and warp are used to create patterns by skipping specific warps to create the individual rug design
- Geometric Patterns - these rugs are a more traditional hand woven flat weave, where the weft and warp are used to create patterns by skipping specific warps to create the individual design
- Rope - the rope weaves are just that, where the extruded polypropylene yarn is knitted into a rope that is then woven into a rug. The rope weaves have a high profile.

**Q6. Can Dash & Albert Indoor Outdoor rugs vary slightly from their nominated size and /or in colour?**

A: As the Dash & Albert Indoor Outdoor rugs are all handmade they may occasionally vary slightly in size and/or colour. Dash & Albert make every effort to ensure that there is minimal colour variation however, some may be expected from time to time (5% is the Australian Standard for carpet colour variation). Slight variations in size and colour is not considered a manufacturers defect on handmade rugs.

## LOOK, FEEL & TOUCH

**Q7. How do Dash & Albert rugs feel to the touch?**

A: Honestly they feel amazing, unlike other Indoor Outdoor rugs on the market the Dash & Albert rugs are as tough as nails but soft to touch, with a texture that actually mimics woven wool. Often we describe it as the difference between wearing a woollen and an acrylic jumper. People are always astounded once they feel the Dash & Albert rugs and so many don't actually believe that they are in fact an Indoor Outdoor rug! By choosing a Dash & Albert Indoor Outdoor rug you combine quality, style and durability to compliment the look and feel of your particular living space.

# FREQUENTLY ASKED QUESTIONS (FAQ'S)

**Q8. How do Dash & Albert rugs compare with other similar available products?**

A: You can't compare Dash & Albert Indoor Outdoor rugs to similar products on the market, there just isn't anything like them – other rugs look and feel like plastic or shiny woven spaghetti but not the Dash & Albert rugs. These high quality, durable and reversible rugs are soft to touch because of their unique construction technique. We encourage you to compare and contrast the Dash & Albert Indoor Outdoor rugs with other products and you will readily appreciate the difference.

**Q9. Can young children play safely on a Dash & Albert Indoor Outdoor rug?**

A: We often have Grandparents and Mum's asking if the Dash & Albert Indoor Outdoor rugs are safe for young children to play on without being scratched. We are happy to say that, yes they are, due to their unique construction technique. So those little crawling knees, elbows and faces should be safe when playing on these rugs.

**Q10. Where can I use a Dash & Albert Indoor Outdoor rug?**

A: These fantastic rugs can be used anywhere you'd use a woollen, cotton or jute rug inside your house – under dining room tables, kids bedrooms and playrooms, kitchens, laundries, bathrooms, the list goes on and on... These rugs have the added bonus of being equally suitable for use on outdoor patios, pool side cabanas and decks, barbeque and outdoor dining areas, the list goes on and on ... There's really no place you can't position one, so put your imagination to work and we guarantee you will not be disappointed with the result.

## CUSTOM SIZED RUGS

**Q11. Can I order a custom sized Dash & Albert Indoor Outdoor rug?**

A: Given that Dash & Albert have such an extensive range of styles, patterns and sizes of Indoor Outdoor rugs available to choose from, at this point in time, they do not make custom sized Indoor Outdoor rugs.

## CARE & MAINTENANCE

**Q12. What routine care and maintenance is required for a Dash & Albert Indoor Outdoor rug?**

A: Routine cleaning and maintenance of a Dash & Albert Indoor Outdoor rug is very easy and time effective. Simply, lightly vacuum, sweep with a broom or pick up the rug and shake it out to remove the general daily build-up of dust and dirt.

**Q13. How do I dry a Dash & Albert Indoor Outdoor rug?**

A: From time to time you may need to wet your Dash & Albert Indoor Outdoor rug with cold soapy water and rinse with water to remove stains and marks. The recommended approach to drying a Dash & Albert Indoor Outdoor rug is to simply hang the rug over a clothes line, balcony or pool fence and allow it to air

dry. This approach will preserve the quality and look and feel of the rug. Do not machine wash or tumble dry the rug.

**Q14. What should I do if I notice threads "popping" out of my new Dash & Albert Indoor Outdoor rug?**

A: From time to time you may notice either a single or a small number of threads popping up from your new Indoor Outdoor rug. This is normal and is not considered a manufacturers defect on handmade rugs. To rectify this situation, do not cut the threads, simply tuck any loose threads back into the rug. You should continue to check for additional threads over the next few months and this process should slow down and eventually cease as the rug settles into position.

**Q15. Can heavy furniture cause indentations in my Dash & Albert Indoor Outdoor rug?**

A: Heavy furniture may cause flattening of your Indoor Outdoor rug. Dash & Albert recommend that you use furniture caps and to rotate your rug regularly to minimise indentations.

## CLEANING

**Q16. How can I clean a Dash & Albert Indoor Outdoor rug if it has mould and mildew on it?**

A: The best way to clean mould and mildew off a Dash & Albert Indoor Outdoor rug is to wet the affected area with cold soapy water and scrub gently with a brush until the mould and mildew come away from the rug. Bleach if required. Hose off the affected area with your garden hose. Hang the rug over the line, balcony or pool fence and allow it to air dry. Do not machine wash or tumble dry the rug.

**Q17. How can I clean a Dash & Albert Indoor Outdoor rug if it has red wine spilt on it?**

A: We all have that friend who talks with their hands, you know who it is.... well that red wine spill comes out! Wet the affected area with cold soapy water, lightly scrub the spill area with a soft brush until the red wine stain comes away from the rug. Hose off the affected area with your garden hose. Hang the rug over the line, balcony or pool fence and allow it to air dry. Do not machine wash or tumble dry the rug.

Red wine stains can be tough so if the stain persists we have found that a little Vanish Preen with Oxi Action on the offending stain works wonders. Wet the affected area with soapy water and apply the Vanish Preen to the affected area, allow the Vanish Preen to soak into the stain, scrub gently with a soft brush until the stain comes away from the rug. Hose off with your garden hose and it will look as good as new. Hang the rug over the line, balcony or pool fence and allow it to air dry. Do not machine wash or tumble dry the rug.



# FREQUENTLY ASKED QUESTIONS (FAQ'S)

**Q18. How do I remove stubborn stains and marks from a Dash & Albert Indoor Outdoor rug?**

A: We all have partners and children who just seem to find new ways of marking and staining furniture and floor coverings! For those really stubborn marks and stains we have found that the application of a little Vanish Preen with Oxi Action on the offending stain works wonders. Wet the affected area with cold soapy water, apply the Vanish Preen to the mark or stain, allow the Vanish Preen to soak into the stain, scrub gently with a soft brush until the stain comes away from the rug and then hose off with your garden hose and it will look as good as new. Hang the rug over the line, balcony or pool fence and allow it to air dry. Do not machine wash or tumble dry the rug.

**Q19. Can marks from indelible pens be removed from a Dash & Albert Indoor Outdoor rug?**

A: You bet you can! Wet the affected area with cold soapy water, spray White King Bleach on the indelible pen marks, and allow the bleach to soak into the stain, scrub gently with a soft brush until the stain comes away from the rug. Repeat if needed. Hose off with your garden hose and it will look as good as new. Hang the rug over the line, balcony or pool fence and allow it to air dry. Do not machine wash or tumble dry.

**Q20. How have the various sizes of Dash & Albert Indoor Outdoor rugs been used by your Clients?**

A: With an Indoor Outdoor rug pattern and size available for all locations, you can let your creative side loose when selecting from this wonderful product range to compliment and complete the design of your indoor and outdoor living areas. We have many clients that have used these rugs in wide variety of ways, so as a general guide we offer the following suggestions:

- Doormats: think entrances, kitchen sinks, laundry sinks and small bathrooms
- Runners: perfect for hallways, stairs, galley kitchens along with balconies and veranda's in terraces and small cottages
- Small Area Rugs: ideal for a child's bedroom, children's play areas, medium sized balconies and veranda's and your cosy outdoor BBQ and dining areas
- Large Area Rugs: fabulous for large living areas, dining rooms, large balconies and veranda's, pool cabanas, wooden poolside decks and BBQ and outdoor dining areas

## TIPS FOR RUG PLACEMENT

**Q21. Do I need to place a rug pad under a Dash & Albert Indoor Outdoor rug?**

A: Dash & Albert recommend rug pads be placed under all of their rug products. If the rug is to be situated predominantly indoors then we would suggest that you purchase a Dash & Albert Rug Stop™ rug pad. On the other hand, if the rug is to be situated predominantly outdoors then we would suggest

that you purchase a Dash & Albert Outdoor Floor™ rug pad, Rug pads can be purchased through any accredited Dash & Albert stockist or interior designers who hold an account with Winton House.

## AVAILABILITY & ORDERING

**Q22. What patterns and sizes are the Dash & Albert Indoor Outdoor rugs available in Australia?**

A: Winton House currently stocks around forty (40) different patterns in the Indoor Outdoor range in five (5) sizes in Australia: Doormats (60 x 90 cm); Runners (76 x 243 cm), Small Area Rug (121 x 182 cm) and Large Area Rugs (182 x 275 cm and 260 x 335 cm).

**Q23. What accessories are available to compliment a Dash & Albert Indoor Outdoor rug?**

A: The great news is that Dash & Albert make a range of Indoor Outdoor pillows and pouf's that can be used to complement the selection of an Indoor Outdoor rug for your living area. The pillows stocked in Australia by Winton House are available in nine (9) patterns and two (2) sizes, 51 x 51 cm and 56 x 56 cm. The pouf's are available in four (4) patterns and are generous in size at 63 x 58 x 43 cm. The pillows have a 100% Poly fill inserts while the pouf is filled with 100% Polystyrene beads. These accessories can be purchased through any accredited Dash & Albert stockist or interior designers who hold an account with Winton House.

**Q24. If the rug pattern and size I like isn't carried by Winton House can I still order this product?**

A: We are pleased to advise that you can place an order for any product available in the current Dash & Albert product catalogue through any accredited Dash & Albert stockist or interior designers who hold an account with Winton House. Products not stocked in Australia by Winton House are deemed as Special Orders. All Special Orders require a 50% non-refundable deposit be paid prior to order being placed with our US supplier with the balance to be paid prior to shipping to your nominated delivery address.

**Q25. Can my pet enjoy the Dash & Albert Indoor Outdoor experience?**

A: We are delighted to advise that Dash & Albert have introduced the Wouf which a high quality, stylish, durable and fully washable pet bed. The Wouf comes in three sizes, small (45L x 60W x 15H cm), medium (60L x 80W x 15H cm) and large (75L x 100W x 15H cm). The Wouf can be cleaned on a routine basis using soapy water and then rinsing with water using your garden hose to ensure that your pet's Wouf remains in a clean, fresh and as new condition. Allow your Wouf to air dry. Do not machine wash or tumble dry. This wonderful accessory can be ordered directly through Winton House or any accredited Dash & Albert interior designer who holds an account with Winton House.

# RUG PADS



## Rug-Stop Rug Pad

This cushy rug pad will have you stopping in your tracks when you feel the difference it makes under your favorite rug. A low profile supports the rug evenly, promoting even wear and keeping it looking handsome year after year, while the woven construction promotes air circulation. Made of PVC-coated polyester with high-grade vinyl, this rug pad is ideal for use under low-profile rugs throughout the home and on staircases.

PVC-coated polyester. Guaranteed not to stain. Fire-retardant, moth-proof, and treated with an antimicrobial guard. Please follow floor manufacturer's instructions when using a rug pad. Cannot be used on radiant heat floors. Hand wash with mild detergent, rinse, and lay flat to dry.

### For Use With:

- Indoor Outdoor (PET) – indoor use
- Indoor Outdoor (Polypropylene) – indoor use



## Outdoor Floor Rug Pad

Take it outside! This sturdy outdoor rug pad provides a no-slip grip while standing up to outdoor conditions. Made of PVC-coated polyester, this rug pad is more rigid and less plasticized than our indoor varieties, allowing it to be used outside without any surface transfer. Layer under your favorite indoor/outdoor rugs to ensure safety and comfort on your porch, deck, patio, in the sunroom, workshop, or even garage.

PVC-coated polyester. May not be suitable for use on vinyl, lacquered, acrylic, Mexican Saltillo tile, terra-cotta, or unsealed surfaces. Please follow floor manufacturer's instructions when using a rug pad. Cannot be used on radiant heat floors.

### For Use With:

- Indoor Outdoor (PET) – outdoor use
- Indoor Outdoor (Polypropylene) – outdoor use

# AVAILABLE RUG SIZES

## INDOOR OUTDOOR POLYPROPYLENE (100%) RUGS – AVAILABLE PRODUCT SIZES

United States Size (‘ feet & “inches)	Australian Size (cm)	Australian Size (m)	Product Size Availability
2’ x 3’	60 x 91	0.60 x 0.91	All Patterns
2.5’ x 8’	76 x 243	0.76 x 2.43	All Patterns
2.5’ x 12’	76 x 365	0.76 x 3.65	Most Patterns
2.5’ x 18’	76 x 550	0.76 x 5.50	Most Patterns
2.5’ x 20’	76 x 610	0.76 x 6.10	Limited Patterns
3’ x 5’	91 x 152	0.91 x 1.52	All Patterns
4’ x 6’	121 x 182	1.21 x 1.82	All Patterns
5’ x 8’	152 x 243	1.52 x 2.43	Most Patterns
6’ x 9’	182 x 274	1.82 x 2.74	All Patterns
8.5’ x 11’	259 x 335	2.59 x 3.35	All Patterns
10’ x 14’	304 x 425	3.04 x 4.25	Most Patterns
12’ x 16’	365 x 485	3.65 x 4.85	Most Patterns

## INDOOR OUTDOOR PET (100%) RUGS – AVAILABLE PRODUCT SIZES

United States Size (‘ feet & “inches)	Australian Size (cm)	Australian Size (m)	Product Size Availability
2’ x 3’	60 x 91	0.60 x 0.91	All Patterns
2.5’ x 8’	76 x 243	0.76 x 2.43	All Patterns
2.5’ x 20’	76 x 610	0.76 x 6.10	Limited Patterns
3’ x 5’	91 x 152	0.91 x 1.52	All Patterns
5’ x 8’	152 x 243	1.52 x 2.43	All Patterns
8’ x 10’	243 x 304	2.43 x 3.04	All Patterns
10’ x 14’	304 x 425	3.04 x 4.25	All Patterns



## INDOOR OUTDOOR RUGS – PET (100%)



ANA AQUA TICKING



ARLINGTON CAMEL IVORY



ARLINGTON CHARCOAL



ARLINGTON NAVY



ARLINGTON PINE



ARLINGTON RED



BIRMINGHAM BLACK



BLUE AWNING STRIPE



BLUE HERON



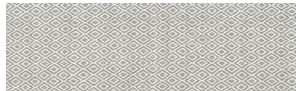
CRYSTAL AQUA IVORY



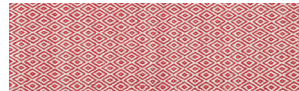
CRYSTAL BLACK IVORY



CRYSTAL BROWN IVORY



CRYSTAL GREY IVORY



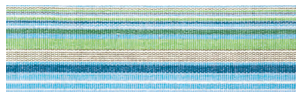
CRYSTAL RED IVORY



CRYSTAL SPROUT IVORY



CRYSTAL SWEDISH BLUE IVORY



FISHER TICKING



GRADATION TICKING



HERRINGBONE CORAL



HERRINGBONE DENIM IVORY



HERRINGBONE FRENCH BLUE



HERRINGBONE FUCHSIA



HERRINGBONE GREEN



HERRINGBONE INDIGO



HERRINGBONE LIGHT BLUE IVORY



HERRINGBONE LINEN



HERRINGBONE NAVY IVORY



HERRINGBONE PEARL GREY



HERRINGBONE RED



HERRINGBONE SHALE



HERRINGBONE SKY



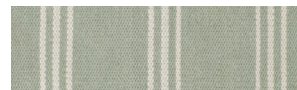
LEXINGTON FRENCH BLUE



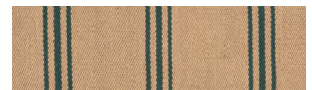
LEXINGTON GREY



LEXINGTON IVORY



LEXINGTON OCEAN



LEXINGTON PINE



LEXINGTON PINK



LEXINGTON NAVY



LEXINGTON SWEDISH BLUE



LEXINGTON RED



MALI CAMEL



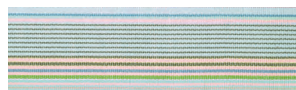
MALI INDIGO



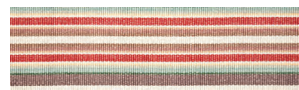
MOSI CAMEL



MOSI INDIGO



NEAPOLITAN



RANCH STRIPE



STAR CAMEL



STAR FRENCH BLUE



STAR GREY RUG



STAR NAVY



STAR OCEAN RUG



STAR PINK RUG



STAR RED



STAR SWEDISH BLUE RUG



STONE SOUP



SWEDISH STRIPE



